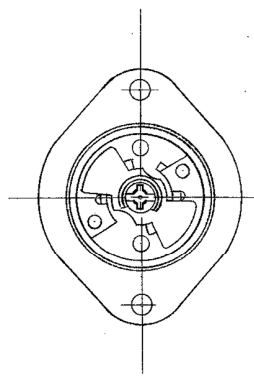
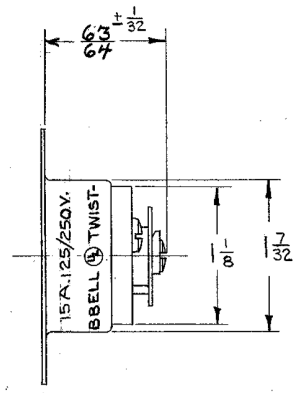
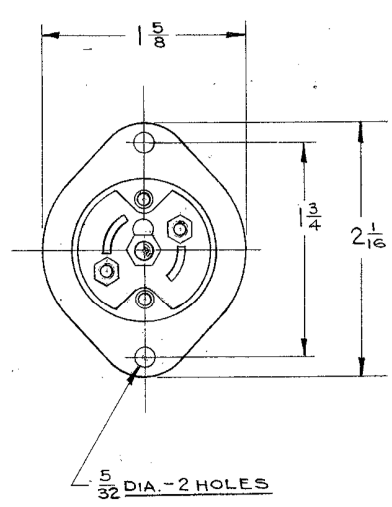


M-1684 5



LIST OF PARTS

DESCRIPTION	MATERIAL	FINISH
BASE	POLYESTER	BLACK
CONTACT BLADES	060 BRASS	
NEUT. CONTACT BLADE	BRASS	
BINDING SCREWS	BRASS	
CASING	025 BRASS	NICKEL PLATE
INSULATOR	031 NYLON	NATURAL
NEUTRAL BIND. SCR.	B BRASS	NICKEL PL.

5	PARTS LIST: BASE MATERIAL POLYESTER WAS PHENOLIC; CAT. NO. HBL7486 WAS 7486 PER DCN 22625 RM	DJP	10/3/17
4	PICTORIAL CHANGE TO BOTTOM VIEW TO SHOW COMBO DRIVE SCREW PER DCN 23087 RM	DJP	5/22/17
3	<del>BASE W/PHENOLIC INSULATOR WAS 7486 PER DCN 22625 RM</del>		<del>2-13-92</del>
2	<del>40000 NEUTRAL BIND SCR, A/L</del>		<del>11-16-89</del>
1	<del>RATING REVISED W/ 15A.125V. A/L</del>		<del>3-1-79</del>

REVISIONS APP DATE  
 SUPERSEDES DWG. DATED 8-27-40

TITLE  
 15A.125/250V. 3-WIRE MIDGET  
 TWIST-LOCK INLET

TOLERANCES UNLESS OTHERWISE SPECIFIED  
 FRACTIONS ± 1/64  
 DECIMALS ± .005  
 ANGLES ± 2°

HARVEY HUBBELL, INC.  
 SHELTON, CT.  
 DR. BY A.S. APP. BY A.S.  
 TR. BY \_\_\_\_\_ SCALE FULL  
 CHK'D. BY J.C.H. DATE 10-6-65